

PowerUp

SKIPPER® UPS

Use the full potential of your backup batteries

- Accurate state-of-health (SoH) diagnosis
 - Optimized and dynamic charging law
 - Centralized monitoring and predictive maintenance
-
-

Features

- MAP® Core Technology inside (2 patents)
- Compatible with 6 / 12 / 24 V Li-ion Batteries
- Compatible with lead-acid chargers



MAP®
INSIDE

PowerUp

Manage & extend batteries life

Skipper® UPS

The Skipper® UPS is helping you get out of a blackbox by ensuring a controlled and optimized monitoring of batteries.

- 1 Transition from lead-acid to Li-ion**
without changing your existing lead charging system
- 2 Increased service reliability**
automatic State-Of-Health (SoH) diagnosis
- 3 Doubled battery lifetime**
thanks to optimized and dynamic charging
- 4 Predictive maintenance**
centralized fleet monitoring (option)
- 5 Remaining useful lifetime and second life management**



Applications

6 / 12 / 24 V Li-ion batteries



MV distribution
automation and
control



Building
automation
and control

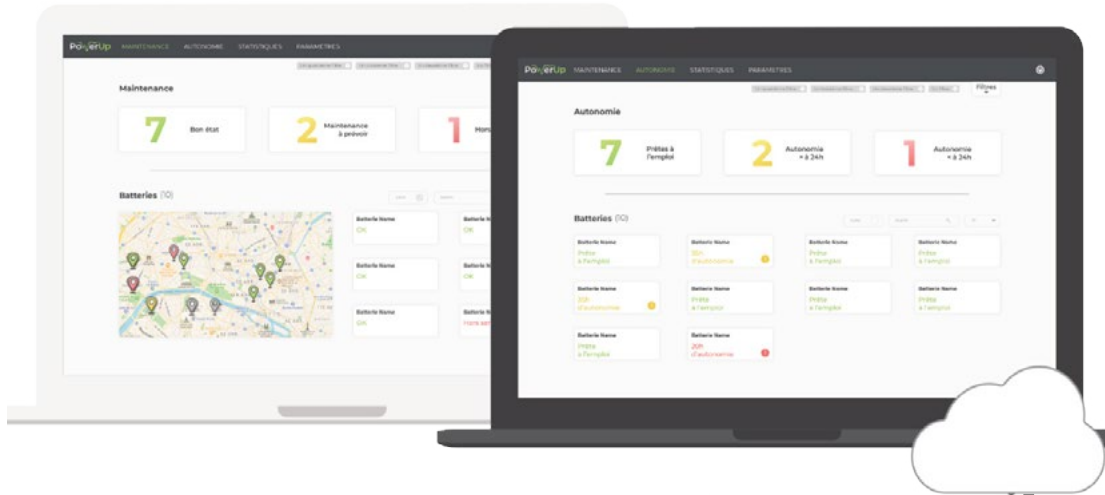


Industry
automation
and control



Rail &
infrastructure

Preserve and supervise your fleet of batteries



State-of-Health and State-of-Charge centralized monitoring

Battery alerts

Lead-acid to Li-ion transition without changing the charging system

Lead-acid charger
 Backup system



Lead-acid charger
 Backup system



Skipper® UPS

MAP® Technology

The Skipper® UPS integrates PowerUp's MAP® technology. MAP® is the result of more than 10 years of research about batteries aging mechanism at CEA-LITEN.



Measure

State-of-Health diagnosis with $\pm 2\%$ accuracy in real use

Service reliability



Act

Dynamic charge leading to +100% in service lifetime

Battery longevity



Predict

Centralized supervision of batteries fleet

Predictive maintenance

Contact :

contact@powerup-technology.com